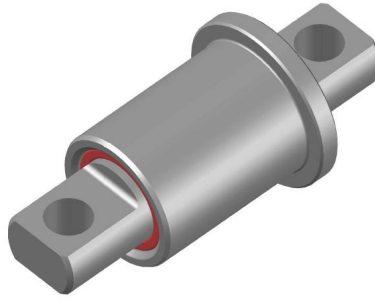


SUSPENSION PARTS (Equalisers & Spring Parts)
Spring Eye Bushes

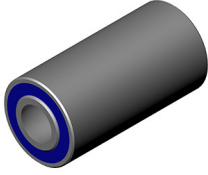
SPRING EYE BUSHES



PART NO.	INCLUDES	A SHAFT HOLE DIA.	B BOSS O.D.	C BOSS WIDTH	D SHAFT HOLE TO HOLE	E SHAFT ACROSS S FLATS	APPLICATION AND GENERAL INFORMATION
09.1654.08	1. 09.1654.03 Shaft (1) 2. 09.1654.09 Bush-Red (2) (Heavy Duty Bush) 3. 09.1654.04 Boss Outer (1) 4. 09.1654.05 Outer Collar	21	63.5	91	144	23	Spring Eye Bush to suit Western Star and Freightliner REPLACES: Freightliner 16-18035-00, 681-325-02-50. 681-325-01-50, 16-139632-00 and ATRO UB20500 and International 3538115C1

	PART NO.	DIMENSIONS	APPLICATION AND GENERAL INFORMATION
	09.1900.08	30mm I.D 57mm O.D 102mm LG	BPW Spring Eye Bush BPW Air bag bush suit OM/OT air spring eye Replaces: BPW 0203169000 , BP1113S OEM1113-s
	09.1901.08	30mm I.D 68mm O.D 104mm LG	York Spring Eye Bush Pivot York Tecair 1 and 2 York no.61506242, Use OEM 1234 bolt and OEM1235 nut. York Air bag bush suit OM/OT air spring eye. Replaces: SAF 4177301000

SUSPENSION PARTS (Equalisers & Spring Parts)
Spring Eye Bushes

	PART NO.	DIMENSIONS	APPLICATION AND GENERAL INFORMATION
	09.1902.08		BPW 70mm Spring Eye Bush